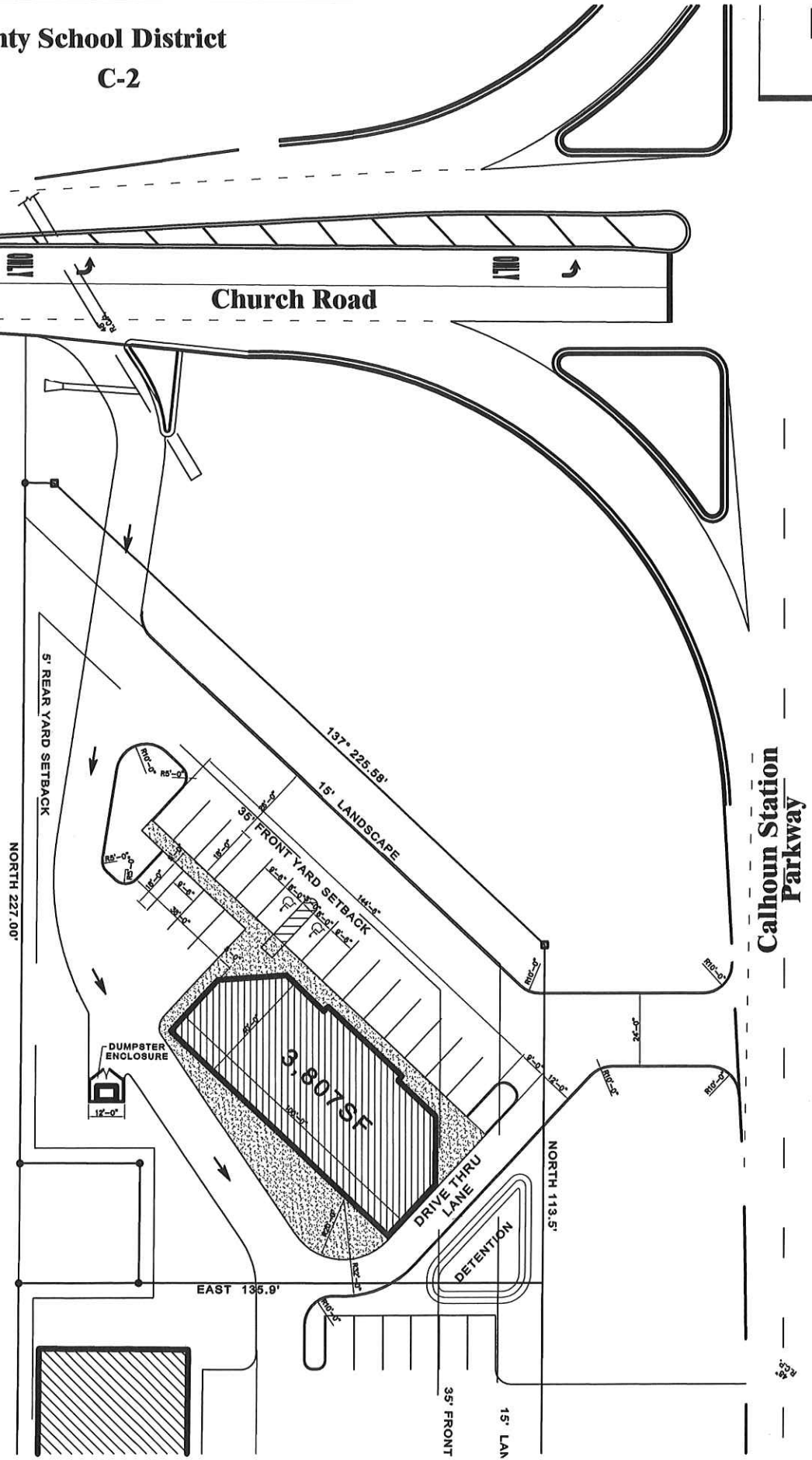


Madison County School District
C-2

Bellsouth Telecommunications, Inc.
C-2



SITE PLAN

ZONING C2

BUILDING USAGE = RETAIL

TOTAL SITE = 32,455SF

BUILDING SF = 3,807SF

LOT COVERAGE = 11.7%

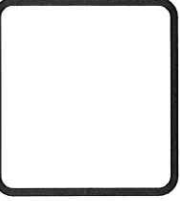
REQUIRED PARKING

3,807SF / 220 = 17.3 SPACES

PROVIDED PARKING

= 19 SPACES

REVISIONS	BY

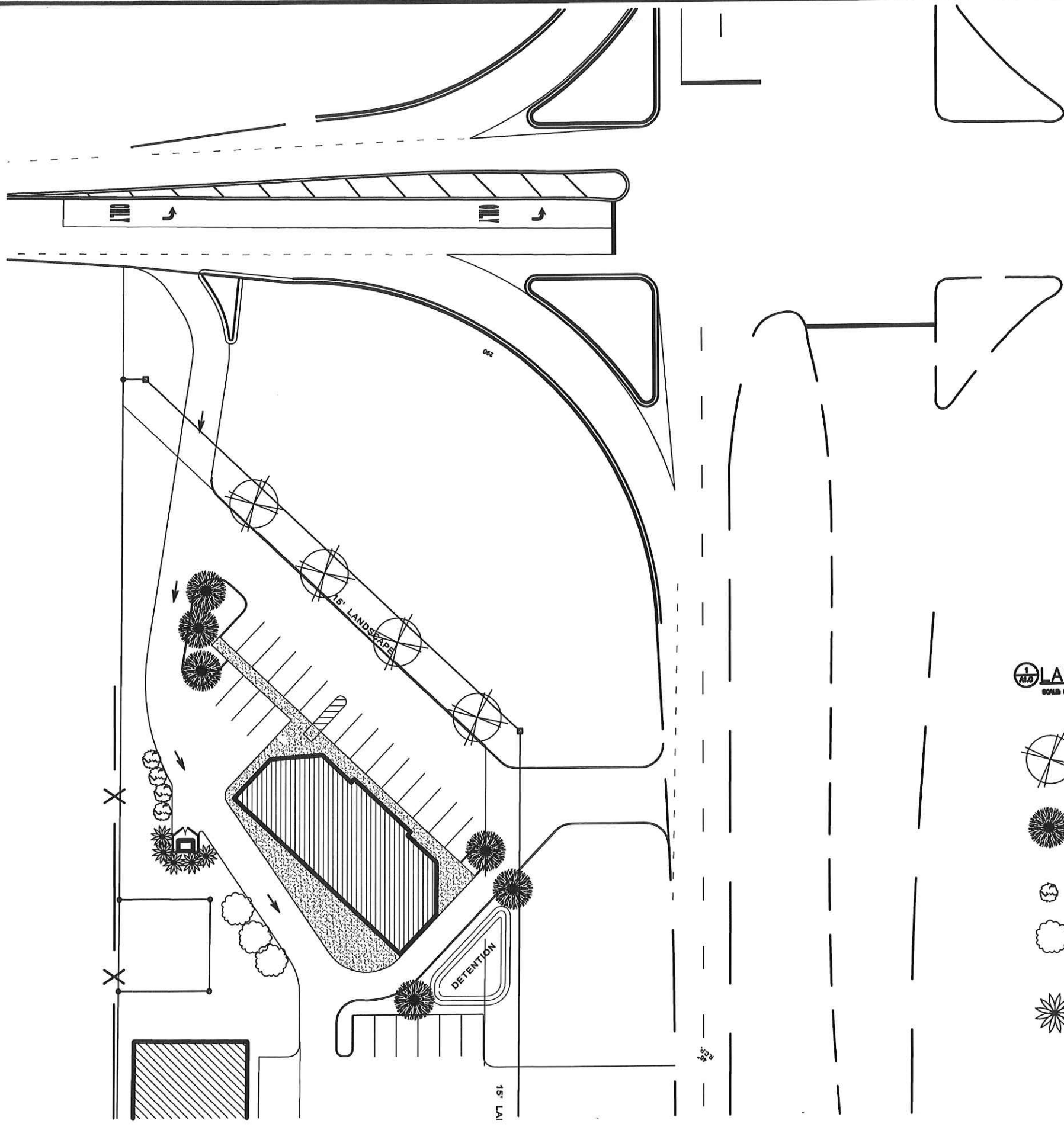


WOOLRIDGE & ASSOCIATES
484 CHURCH RD. SUITE 708
MADISON, MS 39110
601-809-8888
WOOLRIDGEARCHITECTURE.COM

**Calhoun Station/Church Rd
Retail**
Calhoun Station Parkway
Gluckstadt, Mississippi



7/27/21
A0.0



LANDSCAPE PLAN

WILLOW OAK

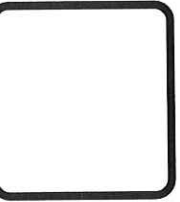
NATCHEZ CRAPE MYRTLE, "LAGERSTROEMIA INDICA X FAURIEI" 7' HTH., f-1" S.T., 3 TRUNKS MIN.

PARSON JUNIPER, JUNIPERUS CHINENSIS 'PARSONII', 3 GAL. @ 3'-6" O.C.

SOUTHERN INDICA AZALEAS, RHODODENDRON INDICA 3 GAL. @ 3'-6" O.C.

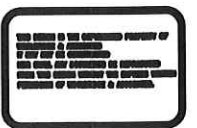
POMPOUS GRASS

REVISIONS	BY



WOOLRIDGE & ASSOCIATES
444 CHURCH RD. SUITE 708
MADISON, MS 39110
601-808-8888
WWW.WOOLRIDGEANDASSOCIATES.COM

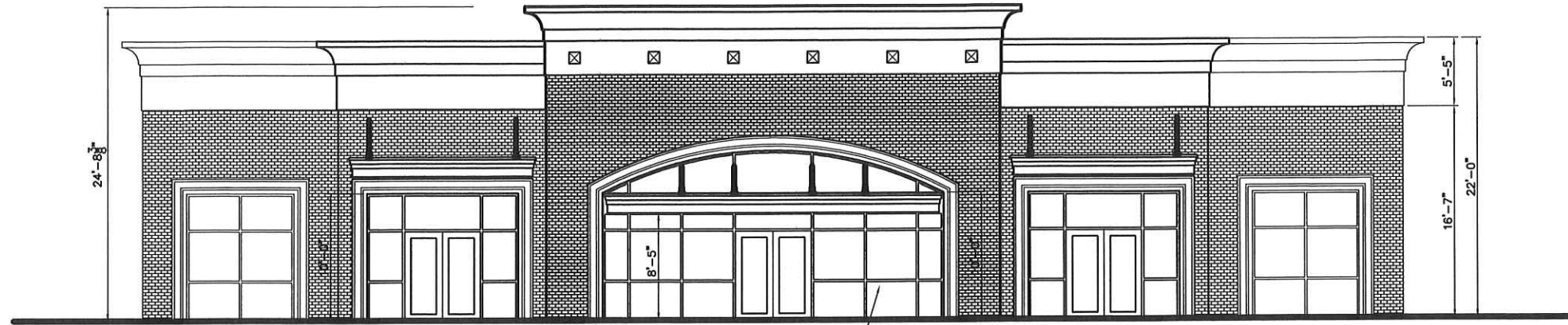
Calhoun Station/Church Rd Retail
Calhoun Station Parkway
Gluckstadt, Mississippi



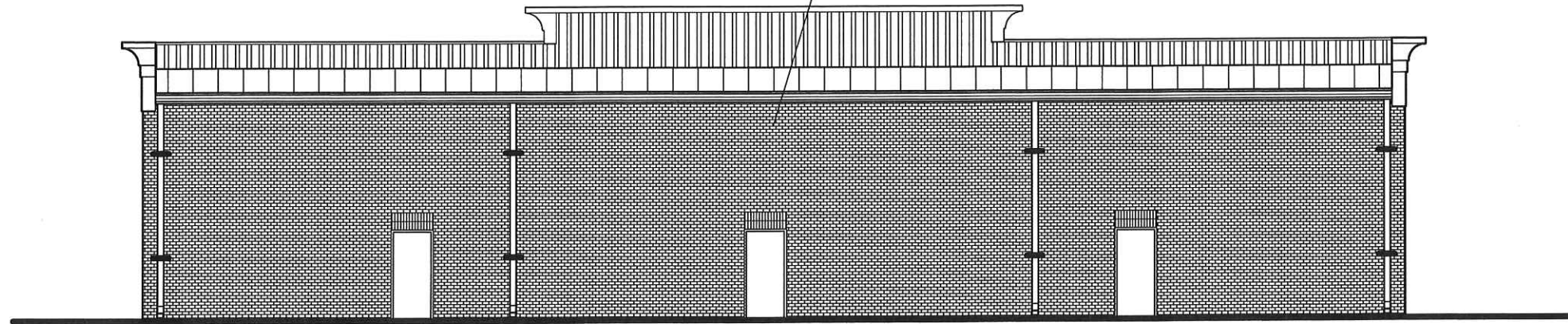
7/27/21
DATE

L1.0

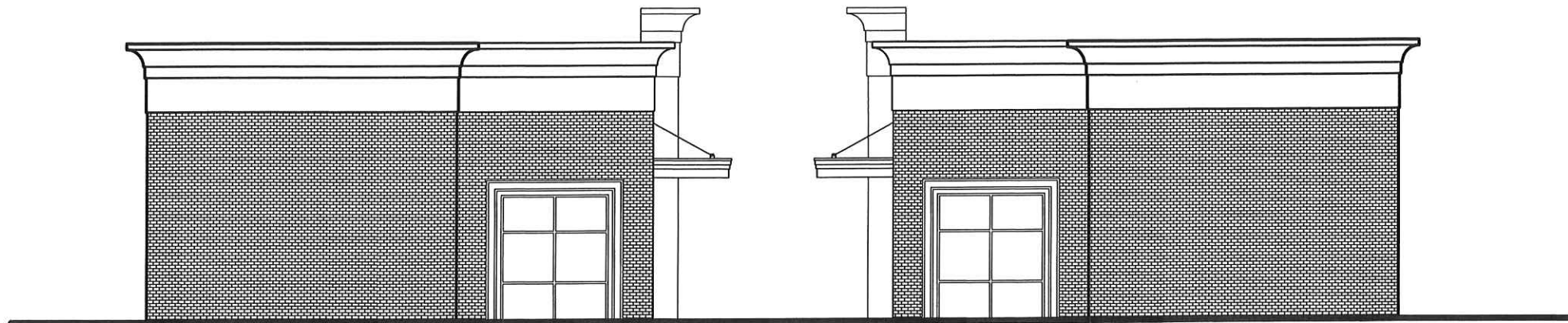
DW 12/16/2020 4:55 PM PATRIC RETAIL.dwg



FRONT ELEVATION
SCALE 3/16"=1'-0"



REAR ELEVATION
SCALE 3/16"=1'-0"



SIDE ELEVATION
SCALE 3/16"=1'-0"

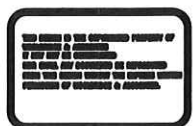
SIDE ELEVATION
SCALE 3/16"=1'-0"

REVISIONS	BY



WOOLRIDGE & ASSOCIATES
444 CHURCH RD, SUITE 700
MADISON, MS 39110
601-209-8888
WOOLRIDGE@GMAIL.COM

**Calhoun Station/Church Rd
Retail**
Calhoun Station Parkway
Gluckstadt, Mississippi



7/27/21
A3.0